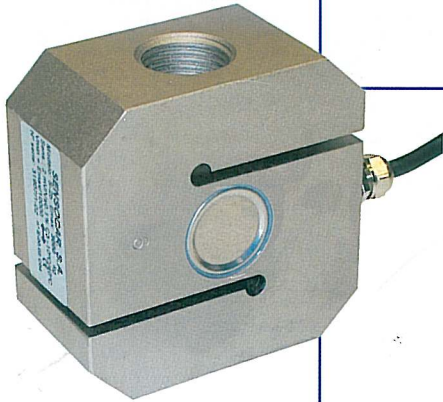


S-2B

Capacidad Capacity 750-1000-1500-2000-2500-3000-5000-6000-10000 kg

CE
Certificate
N° E-00.02.C04



CARACTERÍSTICAS TÉCNICAS

TECHNICAL DATA

Clase de precisión Accuracy class	C3-C4
Sensibilidad Rated output	2 ± 0.1% mV/V
V_{min} V _{min}	E _{max} /12000
Tensión de alimentación Excitation Voltage	5÷15 V
Resistencia de entrada Input Resistance	350 ± 3 Ω
Resistencia de salida Output resistance	350 ± 3 Ω
Margen de temperatura compensado Temperature limits OIML R60	-10° C / +40° C
Resistencia de aislamiento Insulation resistance	> 5000 MΩ

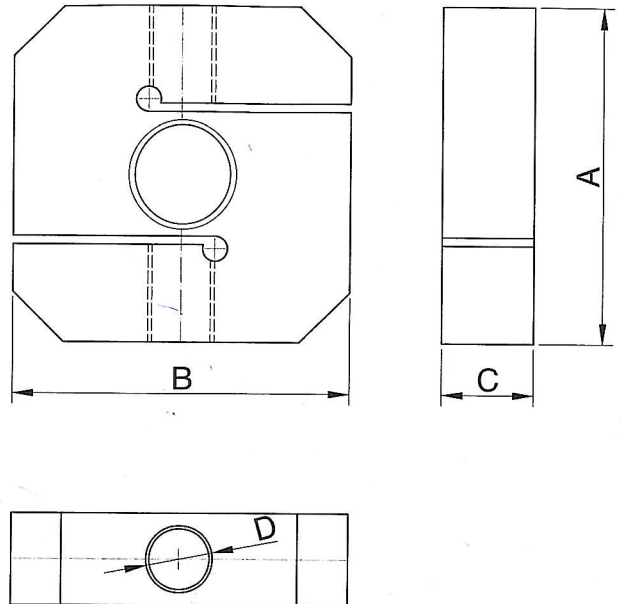
Hasta 4000 divisiones OIML-R60
Up to 4000 divisions OIML-R60

Soporte elástico de acero aleado
Measuring element from steel alloy

Tratamiento anticorrosión de níquel químico
Protected against corrosion by nickel-plated treatment

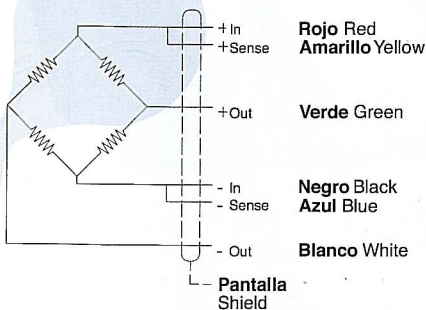
Estanqueidad IP-67
Protected against humidity IP-67

Disponible en acero inoxidable
Available in stainless steel



CONEXIONADO CONNECTIONS

Sense opcional Optional Sense



Capacidad [kg]	750	1000	1500	2000	2500	3000	5000	6000	10000
A	80	80	80	80	80	80	80	80	80
B	80	80	80	80	80	80	80	80	80
C	42	42	42	42	42	42	42	42	52
D	M12	M12	M16	M16	M16	M24x2	M24x2	M24x2	M24x2

35